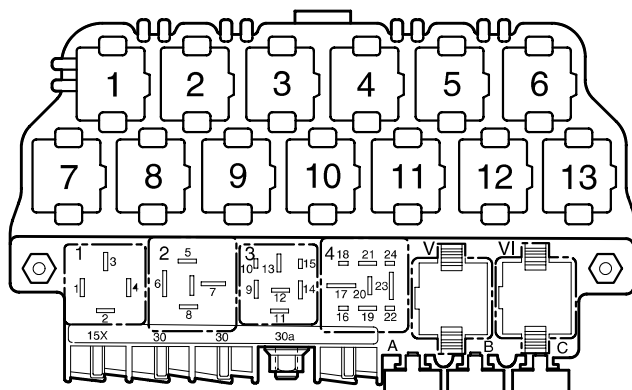


## Radio system "Monsoon" (with CD changer wiring preparation)

from October 2000

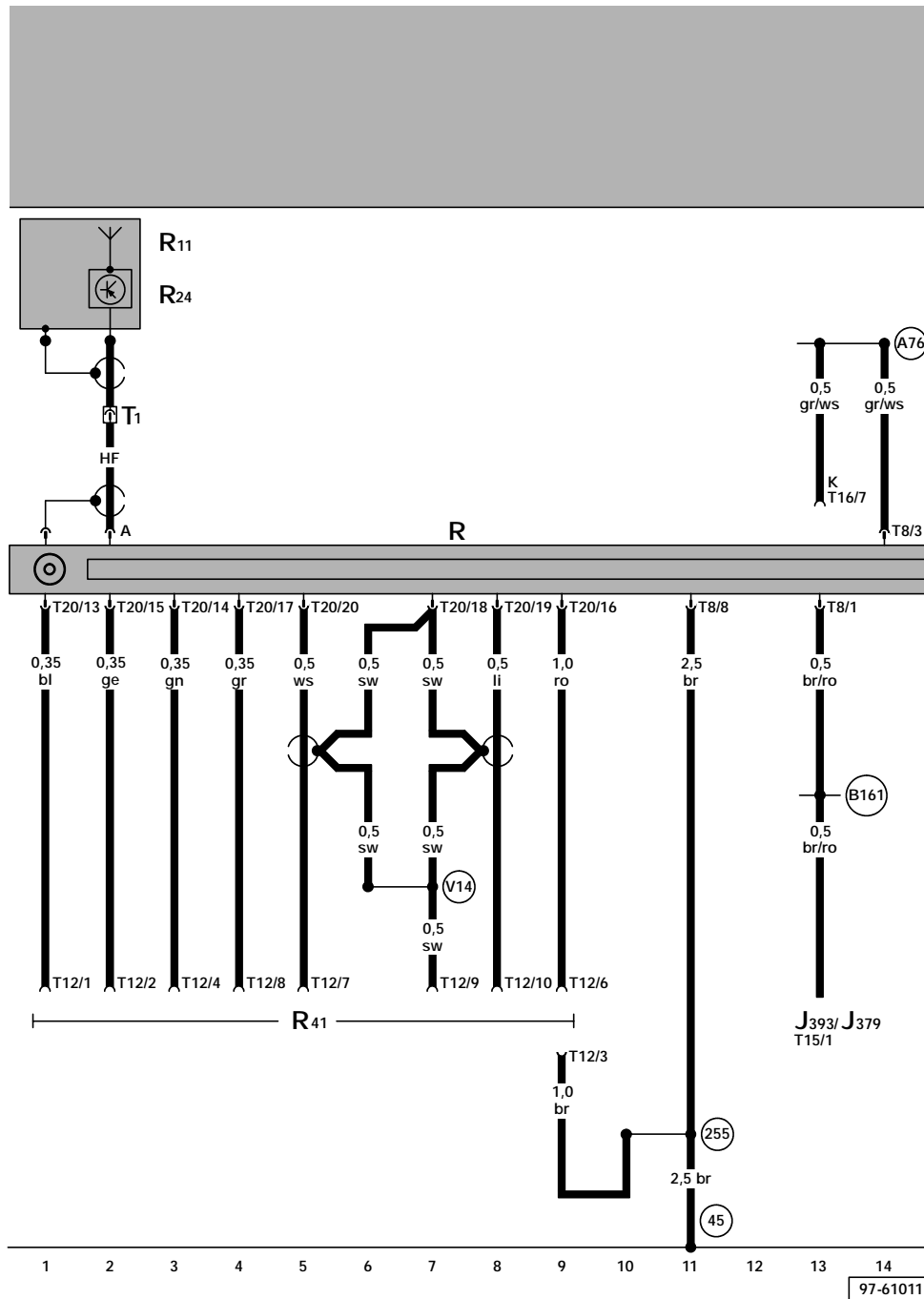
Deviate relay location and fuseplacements as well as the locations of multiple connectors see section "component locations".



97-21956

### Fuse colors

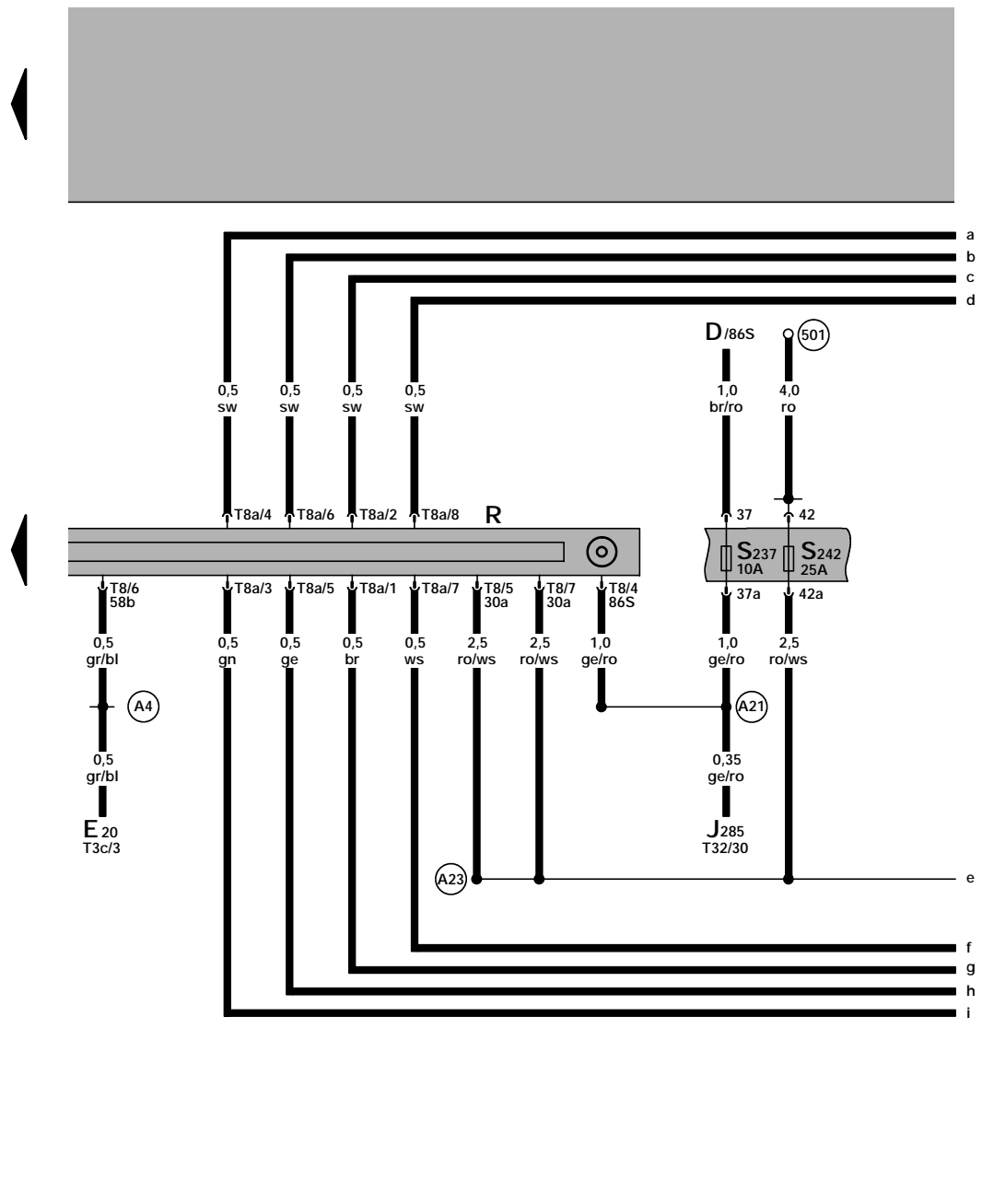
- 30 A - green
- 25 A - white
- 20 A - yellow
- 15 A - blue
- 10 A - red
- 7,5 A - brown
- 5 A - beige
- 3 A - violet



ws = white  
 sw = black  
 ro = red  
 br = brown  
 gn = green  
 bl = blue  
 gr = grey  
 li = lilac  
 ge = yellow

- J379 - Control module for central locking and anti-theft-system
- J393 - Central control module for comfort system
- R - Radio
- R11 - Antenna
- R24 - Antenna Amplifier
- R41 - CD Changer Unit
- T1 - Single Connector
- T8 - 8-Pin Connector
- T12 - 12-Pin Connector
- T15 - 15-Pin Connector
- T16 - Data Link Connector (DLC), below instrument panel, left
- T20 - 20-Pin Connector, on Radio

- (45) - Ground connection, behind instrument panel, center
- (255) - Ground connection, -, in wiring harness radio
- (A76) - Connector (K-diagnosis wire) in instrument panel wiring harness
- (B161) - Connector (anti-theft warning system), in wiring harness interior<sup>Q</sup>
- (V14) - Wire connection (shielding), in CD-changer wiring harness



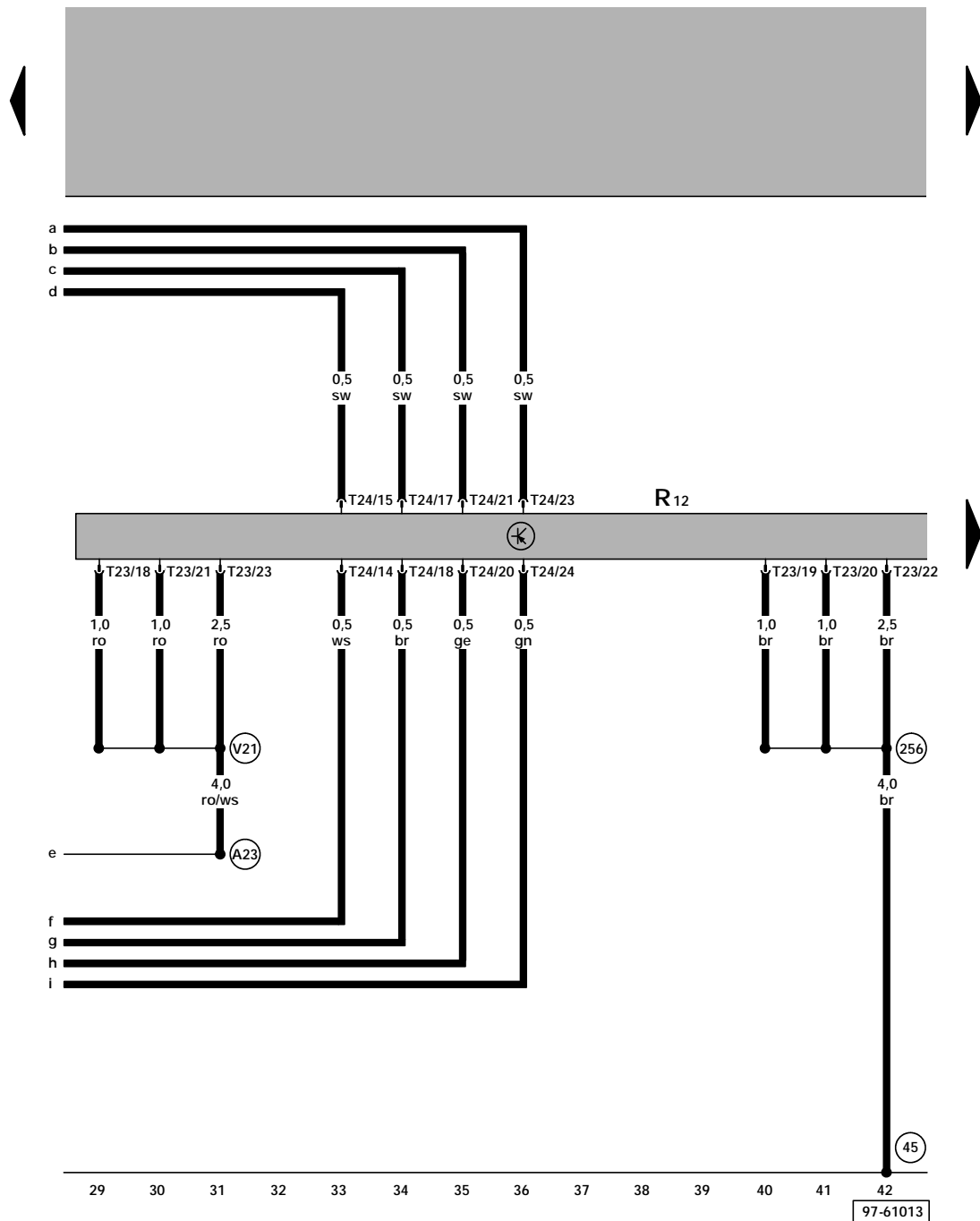
ws = white  
 sw = black  
 ro = red  
 br = brown  
 gn = green  
 bl = blue  
 gr = grey  
 li = lilac  
 ge = yellow

15 16 17 18 19 20 21 22 23 24 25 26 27 28  
 97-61012

- D - Ignition/Starter Switch
- E20 - Instrument Panel Light Dimmer Switch
- J285 - Control module with indicator unit in instrument panel insert
- R - Radio
- S237 - Fuse 37 in fuse holder
- S242 - Fuse 42 in fuse holder
- T3c - 3-Pin Connector
- T8 - 8-Pin Connector
- T8a - 8-Pin Connector
- T32 - 32-Pin Connector, blue

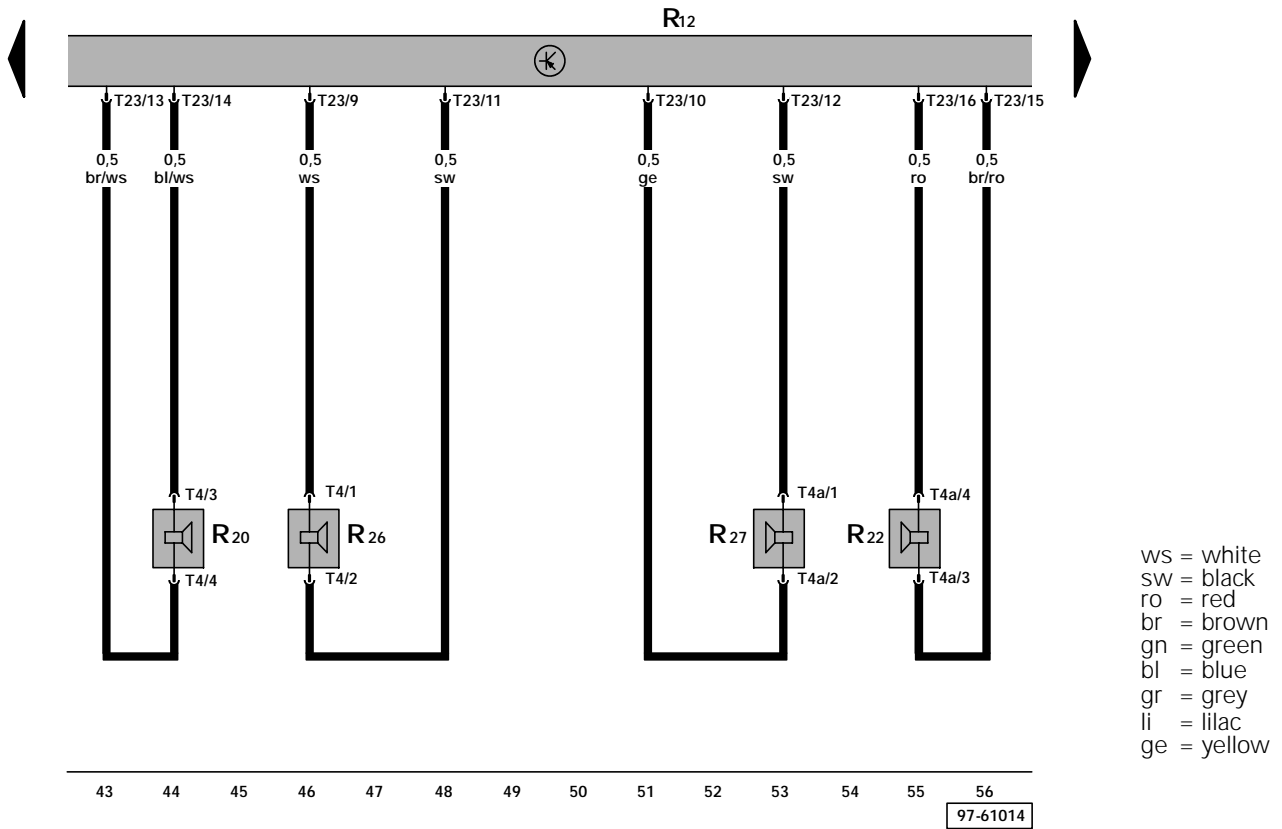
- (A21) - Wire connection (86s), in instrument panel wiring harness
- (A23) - Wire connection (30a), in instrument panel wiring harness

- (501) - Threaded connection -2- (30) on the relay plate
- (A4) - Plus connection (58b), in instrument panel wiring harness



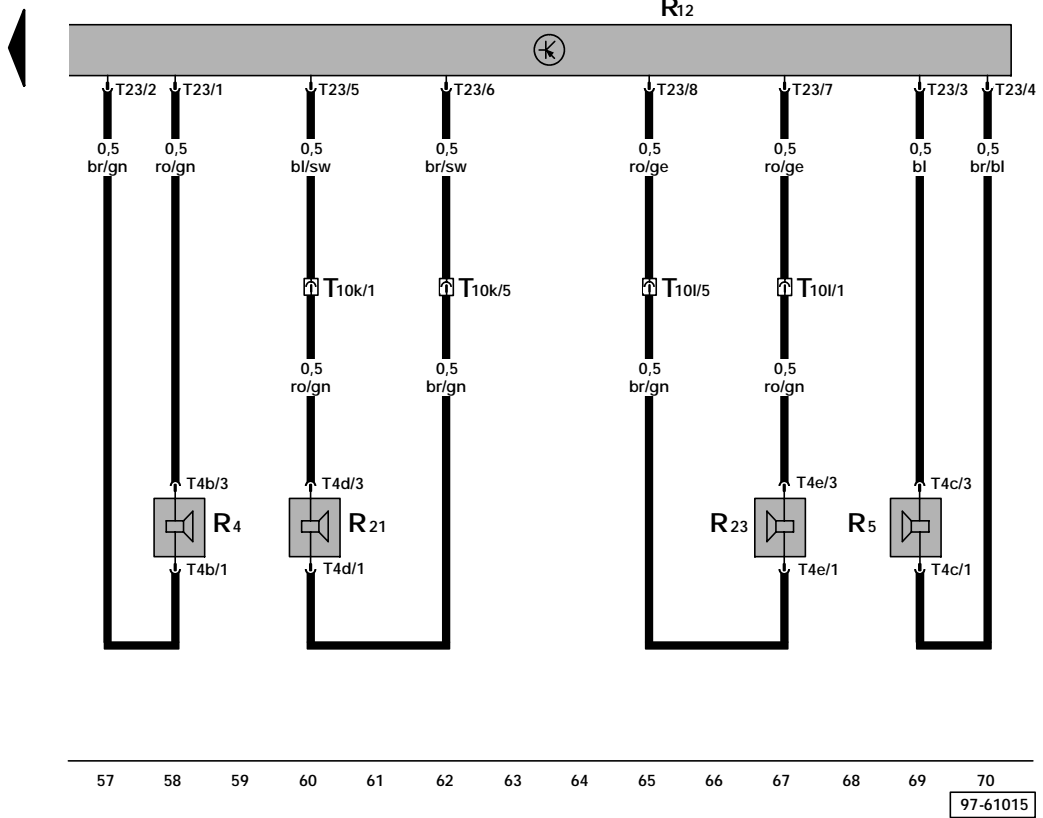
ws = white  
 sw = black  
 ro = red  
 br = brown  
 gn = green  
 bl = blue  
 gr = grey  
 li = lilac  
 ge = yellow

- T23 - 23-Pin Connector
- T24 - 24-Pin Connector
- R12 - Amplifier, in luggage compartment, left
- (45) - Ground connection, behind instrument panel, center
- (256) - Ground connection, -2-, in wiring harness radio
- (A23) - Wire connection (30a), in instrument panel wiring harness
- (V21) - Plus connector (30), in wiring harness Radio-Amplifier



ws = white  
 sw = black  
 ro = red  
 br = brown  
 gn = green  
 bl = blue  
 gr = grey  
 li = lilac  
 ge = yellow

- R 12 - Amplifier, in luggage compartment , left
- R20 - Treble speaker, left front
- R22 - Treble speaker, right front
- R 26 - Left Front Midrange Speaker
- R 27 - Right Front Midrange Speaker
- T4 - 4-Pin Connector
- T4a - 4-Pin Connector
- T23 - 23-Pin Connector



ws = white  
 sw = black  
 ro = red  
 br = brown  
 gn = green  
 bl = blue  
 gr = grey  
 li = lilac  
 ge = yellow

- R 4 - Left Rear Speaker
- R 5 - Right Rear Speaker
- R12 - Amplifier, in luggage compartment, left
- R 21 - Bass speaker, left front in driver's door
- R 23 - Bass speaker, right front in passenger's door
- T4b - 4-Pin Connector
- T4c - 4-Pin Connector
- T4d - 4-Pin Connector in driver's door wiring
- T4e - 4-Pin Connector in passenger's door wiring
- T10k - 10-Pin Connector, black, connector station A-pillar, left
- T10l - 10-Pin Connector, black, connector station A-pillar, right
- T23 - 23-Pin Connector